

SEISMOTECTONICS OF THE GULF OF CADIZ: NEW INSIGHTS FROM INSTRUMENTAL SEISMICITY

S. M. Silva(1), M. Romsdorf(2), L. Matias(3), P. Terrinha(1), W. Geissler(2), F. Carrilho(4) and the NEAREST Working Group(5)

(1) Unidade de Geologia Marinha, Laboratório Nacional de Energia e Geologia, Portugal. sonia.manzoni@ineti.pt, pedro.terrinha@ineti.pt

(2) Alfred Wegener Institute for Polar and Marine Research, Bremerhaven, Germany Martin.Romsdorf@awi.de, Wolfram.Geissler@awi.de

(3) Instituto Dom Luiz, Lisboa, Portugal lmatias@fc.ul.pt

(4) Instituto de Meteorologia, Lisboa, Portugal fernando.carrilho@meteo.pt

(5) <http://nearest.bo.ismar.cnr.it/Partners>

Abstract: The Gulf of Cadiz offshore SW Iberia is an area linked with episodic destructive seismic and tsunamigenic events, such as the 1st November 1755 Lisbon earthquake. The association of active faults to this kind of high magnitude event has been intensively studied specially due to the contribution of several international team projects, working in this area for more than two decades. However, the meaning of the persistent small to intermediate magnitude seismicity recognized in this region is still particularly misunderstood. This problem is mostly related to the lack of an accurate hypocenter location of these events resulting from an asymmetrical geographical distribution of the permanent seismic network. To address this problem the EC project NEAREST (Integrated observation from NEAR shore sources of Tsunamis: towards an early warning system) conducted a passive seismic experiment in the Gulf of Cadiz where 24 broadband seismometers (plus the GEOSTAR multi-parameter deep-sea observatory) were deployed from September 2007 to July 2008. The examination of the continuous data stream allowed the detection of a large number of local events that were not detected by the land networks. The analysis of the complete data set reveals 3 main clusters of earthquakes, two of them coincide with the location of the 3 larger instrumental earthquakes in the area: i) the 28th February 1969 ($M_w \sim 8.0$); ii) the 12th February 2007 ($M_w = 6.0$) and iii) the 17th December 2009 ($M_w = 5.5$). Many of the small magnitude earthquakes are located in the mantle (at depths between 30 and 60 km), like the hypocenters of these three earthquakes derived from waveform inversion. However, focal mechanisms show a mixed pattern, mostly strike-slip and reverse dip-slip with a very few normal mechanisms, showing us that processes related with this seismicity must be complex probably involving the interaction between different active geological structures and reflecting particular local rheological contrasts.

Key words: Gulf of Cadiz, Seismotectonics, Horseshoe Fault, Active Faulting

The Eurasia – Africa Plate Boundary in the region of the Gulf of Cadiz SW Iberia is particularly complex, corresponding to a 200 km elongate wide diffuse

area of deformation (Sartori et al., 1994). The plate kinematic models for this area estimate a convergence of 4-5 mm/yr (Argus et al., 1989,

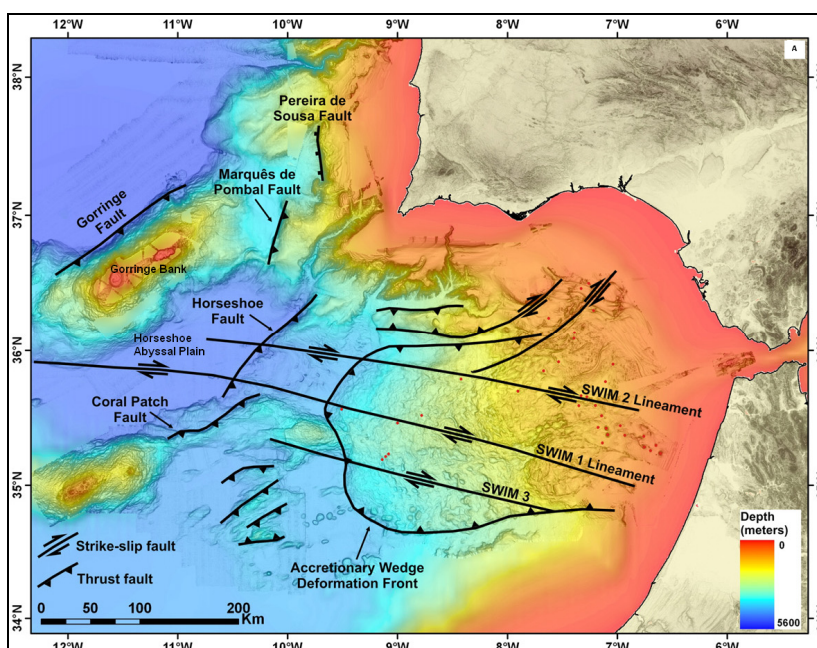


Figure 1: Simplified Map of the active tectonic structures in the Gulf of Cadiz (from Duarte et al., 2010).

DeMets et al., 1994, Nocquet and Calais, 2004, Stich *et al.*, 2006). The regional horizontal average compression is defined as NW-SE, solution based on borehole, focal mechanisms and moment tensor analysis (Ribeiro et al. 1996, Borges *et al.*, 2001, Stich et al., 2006, Heidbach et al., 2008). Two main systems of active faults are present (Fig.1): NE-SW, NW verging thrust faults (e.g. Horseshoe Fault and Gorringe Fault) and WNW-ESE dextral strike-slip faults SWIM Lineaments (Zitellini et al., 2009).

Most of the instrumental seismicity in this area is considered of moderate magnitude and shallow to intermediate depth, mostly above 60 Km (Bufo et al., 2004). However, it is well known the occurrence of high magnitude earthquakes, both historical and instrumental, in Gulf of Cadiz area. The 1st November 1755 earthquake, had an estimated magnitude of 8.8 (Richter, 1958; Abe, 1979) and it was associated with a large tsunami with magnitude 8.6 (Abe, 1979). The 28th February 1969 earthquake, with a magnitude 8.0 (USGS), is the most important instrumentally recorded event in this region. The hypocenter was located beneath the Horseshoe Abyssal Plain (Fig. 1). The focal mechanism is described as thrust faulting with a small strike slip component on a striking NE-SW fault plane (Fukao, 1973). Within the same area occurred the 12th February 2007 earthquake with M_w of 6, corresponding to an oblique reverse faulting solution at 40 km depth sub-parallel to the Horseshoe Fault (Stich et al., 2007). The last 17th December event had M_w of 5.5 (USGS), it was located near the NE limit of the Horseshoe Fault (Fig.1), having an nearly pure strike-slip solution (USGS).

The identification and characterization of seismogenic sources in Gulf of Cadiz area requires an accurate comprehension of seismicity impossible

to establish using only the land stations network. To address this problem, as part of the NEAREST project (Integrated observation from NEAR shore sources of Tsunamis: towards an early warning system GOCE, contract n. 037110), 24 broadband Ocean Bottom Seismometers (OBS) and a seafloor multiparametric station GEOSTAR (Geophysical and Oceanographic Station for Abyssal Research) acquired between September 2007 and July 2008 passive seismic data in this region.

The OBS instruments specifically referred as LOBSTER (Longterm Ocean Bottom Seismometer for Tsunami and Earthquake Research) were manufactured by K.U.M. Umwelt- und Meerestechnik Kiel GmbH, Germany. They were equipped with a Guralp CMG-40T broadband seismometer incorporated in a titanium pressure housing, a hydrophone, and a GEOLON MCS (Marine Compact Seismocorder) data logger from SEND GmbH Hamburg, Germany (Carrara et al., 2008).

The GEOSTAR is an observatory station which comprises a set of geophysical and oceanographic sensors for continuous data acquisition, developed in a project coordinated by the Istituto Nazionale di Geofisica e Vulcanologia –INGV. This station incorporates a 3 component broadband seismometer and a hydrophone (Carrara et al., 2008).

During OBS acquisition time and in a range of 75km distance from the closest OBS, 276 events were identified by land stations, with M_L from 0,5 to 4,7 (data provided by Fernando Carrilho from IM, Carrara et al., 2008).

For the epicentre, hypocentre and local magnitude determination it was only considered OBS and GEOSTAR network stations. However, for the

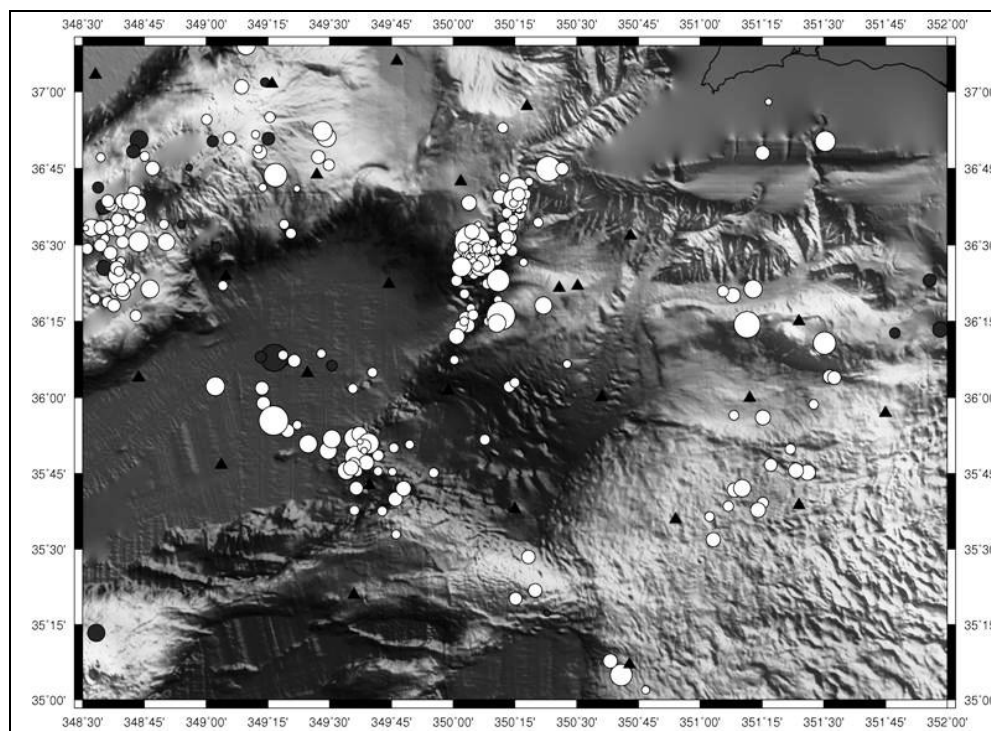


Figure 2: The epicentre distribution of the events derived from Nearest Network, gray circles represents depth < 30Km, white circles depth > 30 Km, the black triangles refers to the seismic network (Bathymetric map adapted from Zitellini et al. 2009)

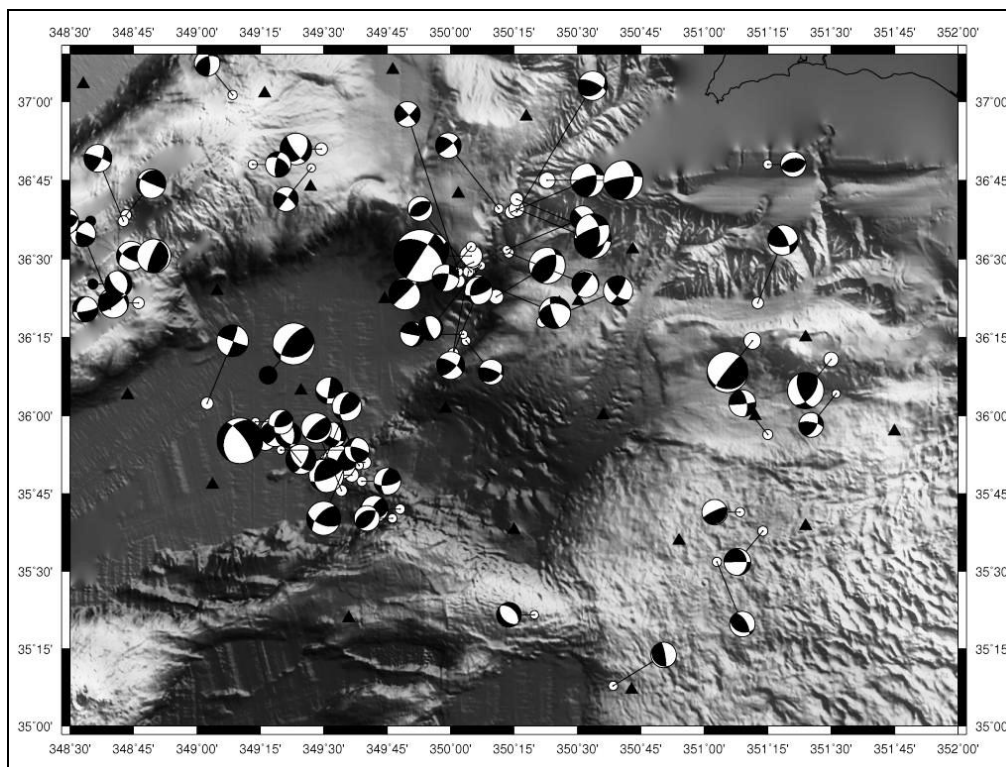


Figure 3: The focal mechanisms solutions derived from Nearest Network, the black triangles refers to the seismic network, gray circles represents depth < 30Km, white circles depth > 30 Km (Bathymetric map adapted from Zitellini et al. 2009)

purpose of computing the focal mechanisms the data from land stations were also incorporated.

The epicentre distribution of the analysed data is presented in Figure 2. Three clusters of earthquakes can be identified: i) in the Goringe Bank; ii) in the Horseshoe Abyssal Plain; iii) near the NE limit of the Horseshoe Fault.

The depth distribution of the hypocentres varies from shallow to intermediate. From Figure 2 it is easily recognized that most of the events are located at depths > 30km, meaning in the upper mantle. The local magnitudes vary between 1.2 and 4.5.

The focal mechanisms are varied (Fig. 3), mostly dominantly strike-slip and reverse dip-slip solutions, although there are also present some normal solutions.

With the Nearest Network it was possible to detect a large number of local earthquakes that could not previously be identified with the existent network. Moreover, when the location of events detected by the landstations network is compared with that of the Nearest network it is clear that the latter is dislocated to the SW and the events are deeper. In fact, based in this analysis the depth discrepancy can be of 30km.

Having presented these new data it is now possible to discuss how to it can contribute to our view on the seismotectonics of the Gulf of Cadiz area. There are two relevant results to discuss: i) the depth distribution of the events; ii) complexity of the focal mechanisms

The deep distribution of the hypocentres implies, as Stich et al (2010) referred, a brittle behaviour of the

upper mantle. So, if we consider that some of the previously identified faults can be are related with the low to moderate seismicity then we can suggest that these structures (observed only down to 15 km, maximum, using seismic reflection data) can extend downwards till 30 to 50km in depth.

The wide-ranging solutions of focal mechanisms implies that the source processes that generate this seismicity are complex. It can reflect the interaction of different active geological structures and local rheological contrasts. Rosas et al. (2008) refers that the interference of SWIM faults and the Horseshoe Fault originate curved faults linking in depth these two systems. These new faults can locally affect the stress field resulting in the mixed focal mechanism solutions observed in the earthquake cluster of the Horseshoe Abyssal Plain (Fig. 3).

The results obtained in this work improves our knowledge about the local seismicity and related actives faults in the Gulf of Cadiz area, giving a new contribution to access to the seismic hazard in this critical region.

Acknowledgements: We acknowledge financial EU Specific Programme "Integrating and Strengthening the European Research Area", Sub-Priority 1.1.6.3, "Global Change and Ecosystems", contract n. 037110 (NEAREST). S. M. Silva acknowledges a Ph.D. scholarship (SFRH/BD/46227/2008) of FCT.

References

- Abe, K. (1979). Size of great garthquakes of 1837-1974 inferred from tsunami data. *Journal of Geophysical Research*, 84 (B4), 1561-1568.
- Argus, D.F. Gordon, R.G., DeMets, C. & Stein, S. (1989). Closure of the Africa-Eurasia-North America plate motion

- circuit and tectonics of the Gloria Fault. *Journal of Geophysical Research*, 94(B5), 5585–5602
- Borges, J. F., Fitas, A. J. S., Bezzeghoud, M. & Teves-Costa, P. (2001). Seismotectonics of Portugal and its adjacent Atlantic area. *Tectonophysics* 337, 373–387.
- Buforn, E., Bezzeghoud, A., Udías & Pro, C. (2004). Seismic sources on the Iberian-African plate boundary and their tectonic implications. *Pure and Applied Geophysics*, 161, 623-646.
- Carrara G., Matias L., Geissler, W., D'Oriano F. & NEAREST Working Group (2008) NEAREST 2008 Cruise Preliminary Report r/v Urania, 1st Aug 2008 - 4th Sept 2008, <http://nearest.bo.ismar.cnr.it>
- DeMets, C., Gordon, R.G., Argus, D.F. & Stein, S. (1994). Effect of recent revisions to the geomagnetic reversal time scale on estimates of current plate motions. *Geophysical Research Letters* 21 (5), 2191–2219.
- Duarte, J., Terrinha, P., Rosas, F., Valadares, V., Pinheiro, L. M., Matias, L., Magalhães, V. & Roque, C. (2010) Crescent-shaped morphotectonic features in the Gulf of Cadiz (offshore SW Iberia). *Marine Geology*, 271, 236-249.
- Fukao, Y., 1973. Thrust faulting at a lithospheric plate boundary, The Portugal earthquake of 1969. *Earth and Planetary Science Letters*, 18, 205-216.
- Heidbach, O., Tingay, M., Barth, A., Reinecker, J., Kurfeß, D. & Müller, B. (2008). The World Stress Map database release 2008. doi:10.1594/GFZ.WSM.Rel2008.
- Nocquet, J. M. & Calais, E. (2004). Geodetic measurements of crustal deformation in the Western Mediterranean and Europe. *Pure and Applied Geophysics*, 161, 661–681.
- Richter, C. (1958) *Elementary seismology* W.H. Freeman and Company, San Francisco, 768 pp
- Ribeiro, A., Cabral, J., Batista, R. & Matias, L. (1996). Stress pattern in Portugal mainland and the adjacent Atlantic region, West Ibéria. *Tectonics*, 15 (2), 641-659
- Ribeiro, A., Mendes-Victor, L., Cabral, J., Matias, L. & Terrinha, P. (2006). The 1755 Lisbon earthquake and the beginning of closure of the Atlantic, *European Review*, 14 (2), 193-205.
- Rosas, F., Duarte, J., Terrinha, P., Silva, S., Neves, M., Gràcia, E. & Matias, L. (2008) Analogue modeling of major thrust and strike-slip fault interference at Iberia-Nubia plate boundary, Gulf of Cadiz. *Bollettino di Geofisica*, 49 (2) supplement, 278-281
- Sartori, R, Torelli L, Zitellini N, Peis D & Lodolo E (1994). Eastern segment of the Azores-Gibraltar line (central-eastern Atlantic). An oceanic plate boundary with diffuse compressional deformation. *Geology* 22 (6), 555–558.
- Stich, D., Serpelloni, E., Mancilla, F., & Morales, J., (2006). Kinematics of the Iberia–Maghreb plate contact from seismic moment tensors and GPS observations. *Tectonophysics*, 426 (3–4), 295–317.
- Stich, D., Mancilla, F. D. L., Pondrelli, S., Morales, J., (2007). Source analysis of the February 12th 2007, Mw 6.0 Horseshoe earthquake: implications for the 1755 Lisbon earthquake. *Geophysycal Research Letters* 34 (L12308).
- Stich, D., Martín, R. & Morales, J. (2010). Moment tensor inversion for Iberia–Maghreb earthquakes 2005–2008. *Tectonophysics*, 483, 390–398.
- U.S.G.S in official website <http://earthquake.usgs.gov/>
- Zitellini, N., Gràcia, E., Matias, L., Terrinha, P., Abreu, M. A., DeAlteriis, G., Henriët, J. P., Dañobeitia, J. J., Masson, D. G., Mulder, T., Ramella, R., Somoza & L., Diez, S. (2009). The quest for the Africa-Eurasia plate boundary west of the Strait of Gibraltar. *Earth and Planetary Science Letters*, 280 (1-4), 13-50